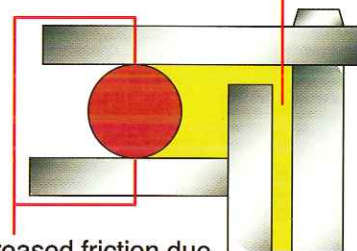
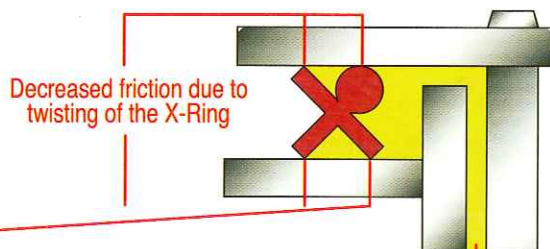
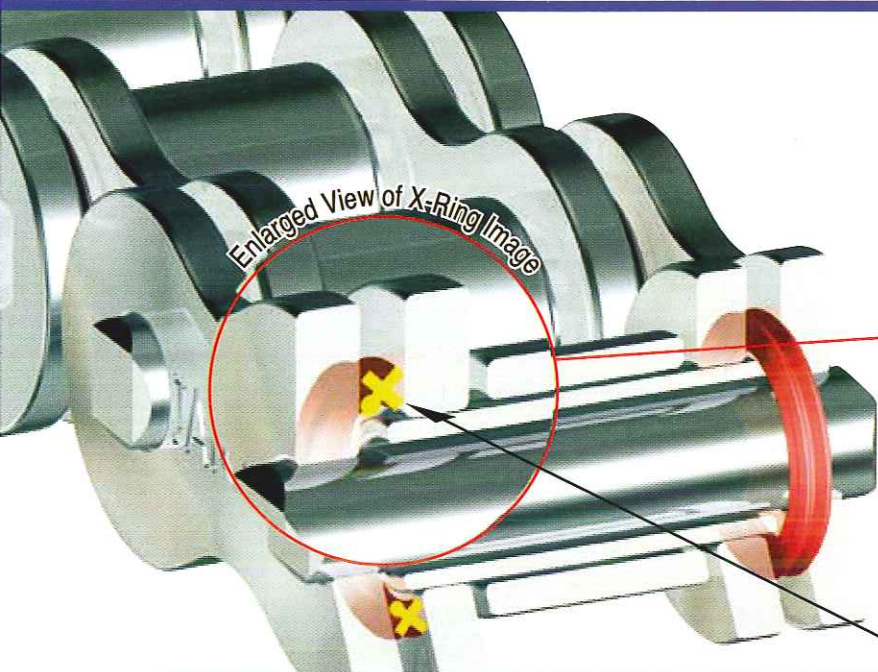




D.I.D. Fit X-Ring Chain

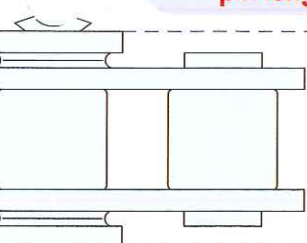
Ultimate Life Chain Series

(RC 40FIT, 50FIT, 60FIT)

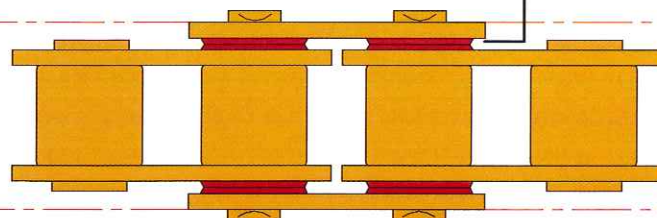


Chain Grease

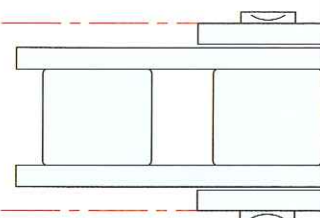
Has the same dimension as ANSI standard chain on overall pin length, outer link width and inner link inside width.



X-Ring Chain/LX

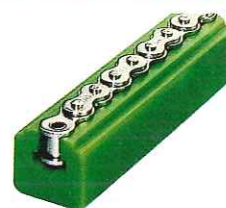


Fit X-Ring Chain/Fit



Standard ANSI Chain

Daido **Fit In Track** ANSI Chains "FIT" into Murtfeldt guides without modification and is available from Daido Corporation of America.

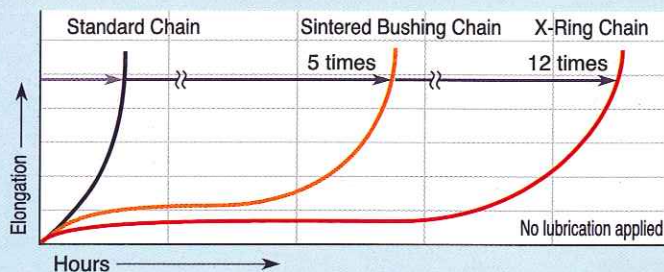


• THE GREATEST WEAR LIFE

Patented X-Ring's outstanding grease sealing performance doubles the wear life of conventional sintered bushing chain.

• THE GREATEST COST SAVING CHAIN EVER

Increased savings in operational and maintenance costs by increasing the chain life



NEW TECH ULTIMATE LIFE CHAIN SERIES

D.I.D Fit X-Ring Chain

- Strength : Equivalent to existing X-Ring Chain/LX.
- Attachment : Can be designed using the same dimensions as ANSI standard.
- Surface Treatment : Can be Nickel Plated.
- Sprocket : Can be used on ANSI sprocket.
- Connecting Link : Interference fit is recommended / Clearance fit optional.
- Offset Link : 2 Pitch style only.
- Caution : Do not use in application where solvents or other substances may attack the X-Ring seal made of "Nitric Rubber".



Chain

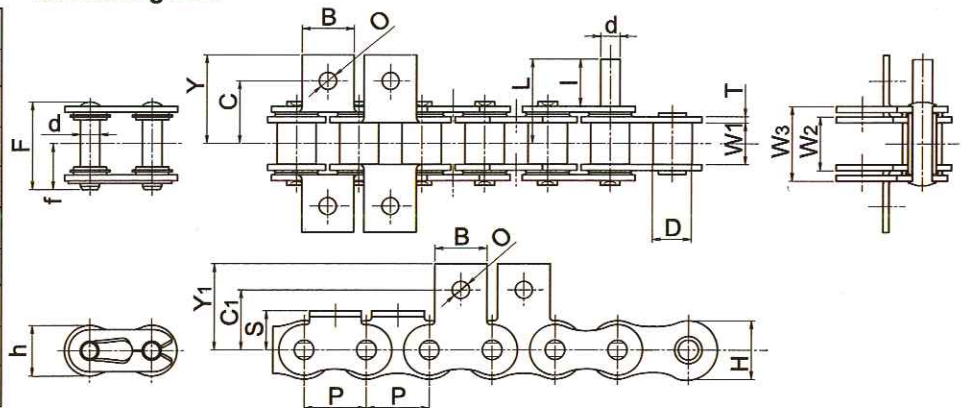
Chain No.	Pitch P	Inner Link Inside Width W1	Inner Link Overall Width W2	Outer Link Overall Width W3	Roller dia. D	Pin						Plate			Avg. tensile strength lbs.	Max. allowable load lbs.	Approx. weight (lbs/ft)	Unit (inch)
						d	E	F	f	L	I	T	H	h				
RC40FIT	0.500	0.313	0.419	0.569	0.311	0.156	0.650	0.693	0.374	0.661	0.375	0.049	0.472	0.409	4,070	836	0.42	
RC50FIT	0.625	0.375	0.504	0.715	0.400	0.200	0.799	0.862	0.457	0.827	0.469	0.059	0.591	0.512	6,754	1,540	0.67	
RC60FIT	0.750	0.500	0.652	0.902	0.469	0.235	1.000	1.059	0.563	1.012	0.562	0.071	0.713	0.614	9,614	2,090	0.99	

Average tensile strength and maximum allowable load shown above is calculated from main chain body.
The strength of the chain with connecting link and/or attachment will be lower.

Standard Attachment

Chain No.	A, K				
	Y	C	S	B	O
RC40FIT	0.693	0.500	0.312	0.375	0.138
RC50FIT	0.906	0.625	0.406	0.500	0.205
RC60FIT	1.063	0.750	0.469	0.625	0.205
Chain No.	SA, SK				
	Y1	C1	B	O	
RC40LF	0.689	0.500	0.375	0.138	
RC50LF	0.890	0.625	0.500	0.205	
RC60LF	1.031	0.719	0.625	0.205	

Connecting Link



D-1, D-3 attachments also available.



P.O. Box 7659
1031 Fred White Blvd., Portland, TN 37148
PH. 615-323-4020 • FAX. 615-323-4015
www.daidocorp.com

Distributed By: